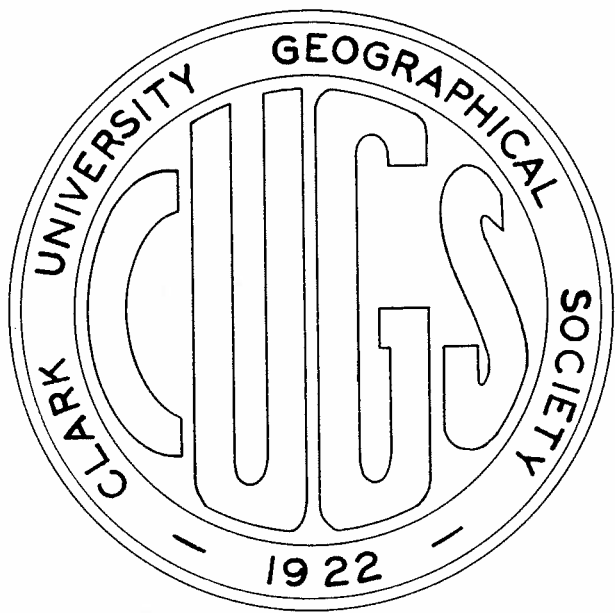


THE MONADNOCK



VOLUME XXXVIII

JUNE, 1964

THE MONADNOCK

is published by the
Clark University Geographical Society
Worcester, Massachusetts

Society Officers 1963-1964

President.....George B. Priddle
Vice President....Duane D. Baumann
Treasurer.....Kui On Louie
Secretary.....Robert L. A. Adams
Social Chairman...David L. Ames
Tea Chairman.....Bobbie G. Newman
Co-editors, The Monadnock...
David G. Arey and Peter G. Goheen.

To the C.U.G.S. membership:

Of course you all know that without your help this magazine could not be published. We want to express our deep appreciation for the efforts all of you have made this year to allow The Monadnock to continue. It is our sincere hope that this issue measures up to your expectations and that any errors that may lurk between the covers will be forgiven.

We feel that special thanks this year should go to Mrs. Helen K. Arey who typed the draft, Mr. Guy Burnham who looked after the funds and gave consistently good advice, and Mr. Salvatore J. Natoli for writing the section on Dr. Van in the Staff News.

David G. Arey
Peter G. Goheen
Co-editors

DIRECTOR'S MESSAGE

THE GRADUATE SCHOOL OF GEOGRAPHY: 1964

Another year has come and gone, and another message to you, the alumni, is in order. It's not an easy assignment since so much that I might say is covered later on in this brochure by the individual staff members. They know better than I what they've been doing and are planning to do. I feel that we have a hard-working, active department. If we just had more staff members to multiply our average accomplishment by, we would make a really impressive showing.

If you have been reading the Monadnock each year you know the names and interests of our current staff. Henry Warman, Rod Snead, and Bob Kates speak for themselves elsewhere in this issue. Guy Burnham continues to hold forth downstairs, and Van has been dividing his teaching hours between Clark and Holy Cross. I pointed out in the last Monadnock that Roland Fuchs of the University of Hawaii would be here this year. He has been rendering yeoman service in judging articles for Economic Geography as well as in doing some interesting teaching. The Soviet Union course, especially, will be missed.

Next year the picture will be different. Van will be living in Washington, D.C., where he will be in charge of the department at George Washington University for a year. And two new faces will appear on the staff list at Clark. Martyn Bowden, who is in the last stages of his Ph.D. work at the University of California, Berkeley, will join the staff. Bowden is from England where he worked several years with Darby before coming to the States. Now, after a year on the staff at Dartmouth, he will bring to Clark something of the Berkeley Cultural-Historical point of view, and, we hope, will encourage students to add another dimension to their work.

Another staff change is the addition of Dr. Carolyn J. Ryan as Assistant Editor of Economic Geography and Lecturer in Geography. She will teach the undergraduate course in Economic Geography and will to a considerable degree be responsible for getting out the magazine, thus liberating the Director (and Editor) to do some teaching again. The magazine, by the way, is prospering, with a steadily growing circulation total and some excellent material coming in.

Last year I pointed out that we had instituted a new plan. A student must have his M.A. thesis accepted before he can start his last year of residence for the Ph.D. Toward the same end, we are trying to speed up the M.A. degree. If someone comes to Clark to work for his M.A. and has a good background and hence no deficiencies to make up, he

can sign up for a thesis course or even a double-thesis course in the second semester, thus making it feasible for him to finish the M.A. thesis some time in the summer following his first year.

There is another problem on which the staff will welcome suggestions. Just when and where should field camp be held? The old idea of having it for several weeks just after school started had certain disadvantages. The undergraduate and "200" courses had to be taught by substitutes for several weeks. This is poor pedagogy, a poor way to meet the natural interest a student is likely to have when he begins a course. The most practicable substitute seems to be to hold the camp in the two weeks before registration. But it is hard to find quarters for that period. Should we try to change over to a summer camp, as many departments have? Should we try to combine with the department of some other university for field camp purposes?

Did I mention the Association Meetings at Syracuse? They were near enough this year so that several of our graduate students were able to attend. Most of the staff was there, of course, and there was an excellent turnout of Clark Alumni. About 70 people attended the breakfast. They ranged in age from seven or eight (Karl Stacey's daughter to -- well, it wouldn't be polite to guess at the top limit represented). The meetings started at about 9:15 each morning. Hence, we were able to have the Clark breakfast at 8:00. Van was unable to attend the meetings, but I am sure had he been on hand he would have been scandalized at people starting their day so late.

Incidentally, many of you like to think of Clark as a world school of geography. Lest you think the school is changing in this regard, let me point out some characteristics of our fall enrollees. Of the 30-35 people who have accepted appointments, fourteen are from abroad. Twelve different countries are represented by these students: Korea, Japan, Okinawa, Thailand, India, Pakistan, Iran, Egypt, France, Uruguay, Peru, and Canada. With such a group, much geography is sure to be learned outside of the classroom.

I'm proud of my closing note. As you'll see elsewhere in this Monadnock, most of the staff will be at the I.G.U. meetings. So here it is: See you in London! or, as Van would put it, I will see you once in London!

Raymond E. Murphy

STAFF NEWS

Dr. Samuel Van Valkenburg

Thirty-two years ago Dr. Van Valkenburg began a continuous and vital association with the Graduate School of Geography and Clark University. For many, the associations between Dr. Van and Clark have been synonymous. His course in Political Geography was the capstone in the college career of hundreds of Clark undergraduates and an exciting exercise in intellectual turmoil for hundreds of graduate students.

Since his retirement as Director of the Graduate School of Geography in 1962, Dr. Van's life has been just as varied, active and as vigorous as before. In addition to continuing to teach his course in political geography at Clark, he taught it as well at Brandeis in 1962-63 and at Holy Cross in 1962-64. His past year's activities and travels might leave the less energetic breathless. He is still the General Editor of the Van Nostrand series in geography which just recently published Boesch's A Geography of World Economy. Last winter he took some time out to deliver a series of talks at the Universities of Alberta at Edmonton, British Columbia at Vancouver, and Victoria in Canada and wound them up at Oregon State College at Corvallis. Then followed a short trip to Europe as a special consultant on the location sites for a chain of motels to be constructed in western Europe.

Now, he is in the process of vacating his office on the third floor of the Geography Building and setting up headquarters for next year at George Washington University. This summer, under the auspices of G.W., he will conduct a seminar in Western Europe and then lead a class on an excursion to Western Europe. Next fall he will teach courses in political geography and the philosophy of geography at George Washington.

Mrs. Van and Dr. Van will be at home in Washington at "The Elsie", 825 New Hampshire Avenue, N.W., Washington, D.C.

Guy Burnham has continued to serve with zeal and true humanity in the workroom and cartographic lab this year. For the first time in 40 years he will not be teaching summer school this year! It would seem that he is due for a vacation! He hopes, however, to be back in the "salt mines" next fall.

Roland J. Fuchs spent this year at Clark on leave from the staff at the University of Hawaii. His teaching duties during his stay included two semesters of Urban Geography, a seminar in Changing Goals in Geographic Research, and Geography of the U.S.S.R. His paper "Soviet Urban Geography: An Appraisal of Postwar Research" which was given at the Denver meetings of the A.A.G. will appear in the June issue of the

Annals. He also helped edit Economic Geography this year. Last summer Professor Fuchs attended a Conference on Computer Applications in Geography at Northwestern University. This summer he will spend six weeks at the University of California at Berkeley attending the Regional Science Institute. Next year he will return to the University of Hawaii as Chairman of the Department of Geography.

Robert Kates continued offering work in natural resources and quantitative methods. The installation of an IBM 1620 computer on campus provided a new tool for instruction and research.

Mr. Kates is completing a study of methods of flood damage evaluation in the Lehigh Valley done in association with the Harvard Water Program and with the assistance of Klaus Kroner and David Arey. With Professors Snead and Burton (University of Toronto) he is helping to complete a two year study tentatively entitled, "The Shores of Megalopolis: Coastal Occupance and Human Adjustment to Flood Hazard" for C.W. Thornthwaite Associates' Laboratory of Climatology and the Office of Naval Research.

During the year, Mr. Kates' long-term interest in environmental perception led to publication, with Ian Burton, of an article "The Perception of Natural Hazards in Resource Management;" service as chairman of a session at the Syracuse meeting of the AAG and the AAG Committee for the Utilization of Stored Data Systems. This summer he plans to attend both the European Regional Science Association Meeting in Ghent and the International Geographical Union Meeting in London.

Raymond E. Murphy served as Director of the Graduate School of Geography and Editor of Economic Geography during the past school year. He taught only one course the first semester and none at all the second. During the year his "Town Structure and Urban Concepts in New England" appeared in the Professional Geographer. He completed his book, The American City: An Urban Geography in the spring and shipped it to the publishers. It is now in the first stages of being "in press."

During the summer he will attend the I.G.U. meetings in the United Kingdom, including an urban geography symposium at Nottingham before the London meetings and another urban symposium at Edinburgh afterward. He will serve as one of the chairmen of the economic geography section at the regular I.G.U. meeting and also as chairman of one of the sessions at Edinburgh. At the Edinburgh symposium he will present a paper on "The Fragmented Political Pattern of the American Urban Agglomeration".

Rodman E. Snead has had a busy year. During the first semester he taught Principles of Geomorphology, Elements of Weather and Climate, and Geography of South Asia. In the second semester his courses were Regional Physiography, Regional Climatology, and a seminar in

Geomorphology. Last October he presented a paper, "Recent Morphological Changes along the Atlantic Seaboard from Maine to South Carolina," at the regional meeting of the AAG at Rutgers University. At the Syracuse Meetings of the AAG this spring Dr. Snead presented "Active Mud Volcanoes of Baluchistan, West Pakistan." This will appear as an article in a forthcoming issue of the Geographical Review. The Louisiana State University Press is publishing his dissertation, "Physical Geography of the Las Bela Coastal Plain, West Pakistan", as Volume 12 of Coastal Studies Series.

This summer Dr. Snead plans to attend the I.G.U. meetings in London and participate in a geomorphology field tour to southern Ireland. He has received a Libby grant and a Shell grant to do coastal geomorphology research along the coast of Spain and Portugal during the month of August, after the I.G.U. meetings. With Professors Kates and Burton (University of Toronto) he is helping to complete the physical part and air photo analysis of a two year study tentatively entitled, "The Shores of Megalopolis: Coastal Occupance and Human Adjustment to Flood Hazard" for C.W. Thornthwaite Associates' Laboratory of Climatology and the Office of Naval Research.

Henry J. Warman also had a full schedule this year teaching Human and Cultural Geography during both semesters, Geography of South America, Seminar in Cultural Geography as well as day school and night school sections of Introductory Geography. He wrote "Major Concepts in Geography" which will be the second chapter in Curriculum Guide for Geographic Education edited by Wilhelmina Hill, University of Oklahoma Press, Norman, Oklahoma, to be published in 1964. His address, "The Core of Geography Education", given before the NCGE was published in October, 1963, in the Journal of Geography.

During the year Dr. Warman has been editor and consultant for Allyn and Bacon Publishing Company, Boston, working on a series of social studies texts and the Alpha Series of Map Transparencies on the Mid-Continental U.S. He also continued to serve as consultant in geography to the Newton, Massachusetts Schools.

Dr. Warman has been serving as the Chairman of the Distinguished Service Award Committee of the NCGE and Chairman of the Social Science Committee of the Massachusetts Education Study.

This summer Dr. Warman will conduct a two week workshop in geography at the University of Missouri in Kansas City before going to the I.G.U. meetings in London. At the meetings he will present "Geography Teaching and the Structure of the Discipline" and will participate as a discussant of four papers to be presented before the congress starts. After the Meetings he will join Dr. Van in a party doing field studies in Europe from July 25th to August 28th.

His next year's plans call for a revision of the White-Renner textbook College Geography and preparation of a paperback book on Human Resources of the United States.

ALUMNI ACTIVITIES

Lewis M. Alexander (M.A. 1948, Ph.D. 1949) is Professor of Geography at the University of Rhode Island. His book, Offshore Geography of Northwestern Europe, is the third publication in the A.A.G. monograph series. A second edition of his book, World Political Patterns, was published in January, 1964. At present he is working on an O.N.R. Research Project on the Narragansett Bay area.

Agnes M. Allen (M.A. 1934, Ph.D. 1937) is at present the Director, School of Natural Science, at Arizona State College at Flagstaff.

Esther S. Anderson (Ph.D. 1932) has been appointed as a Consultant to the Division of Earth Sciences in the Research Council of the National Academy of Sciences, Washington, D.C. She published an article entitled "Geography in a Changing World," in the winter 1963 issue of the Delta Kappa Gamma Bulletin. Dr. Anderson is Secretary-Treasurer of the Clark Alumni Association in Washington.

William R. Anderson (M.A. 1963) is teaching geography at the Colorado Academy in Denver Colorado.

Rollin S. Atwood (M.A. 1925, Ph.D. 1928) is a Professor of Geography, School of International Studies, in the American University in Washington. He has retired from the Department of State and resigned from his post in the Inter American Development Bank and reports he is enjoying his recent return to academic life and work.

John P. Augelli (B.A. 1943) is Professor of Geography and Director of the Center of Latin American Studies at the University of Kansas. His article, "The Controversial Image of Latin America: A Geographer's View," was published as Professional Paper No. 24, by the N.C.G.E.. He wrote "Brasilia: The Emergence of a National Capital," published in the Journal of Geography.

Ruth E. Baugh (M.A. 1926, Ph.D. 1929) is now Professor Emeritus, the University of California. She reports motoring through New England last October, and revisiting Petersham where she assisted Ellen C. Semple in putting through the press her book "The Geography of the Mediterranean Region."

Paul R. Beaudet (M.A. 1961) sends his best wishes from Buffalo.

George Beishlag (M.A. 1937), Professor of Geography, Towson State College, Baltimore, will be Visiting Professor of Geography at the University of Manitoba, Winnipeg, Manitoba, Canada in the summer of 1964.

Carl G. Berg (M.A. 1942) is the Principal of the Burncoat Sr. High School here in Worcester. His duties will begin in September, 1964.

Malcolm H. Bissell (1927-28) spent 3½ months of his retirement in traveling in Japan, Australia, and New Zealand in early 1964. He announces the birth of a great-grandson born on February 24, 1963.

Lloyd D. Black (M.A. 1936) is a Development Planning Economist in the Bureau for Africa, Agency for International Development in Washington, D.C., as well as holding a post as Adjunct Professor at the American University. He reports traveling to Africa in the fall of 1963 as a member of the U.S. delegation to the Economic Commission for Africa Standing Committee on Trade meetings held in Niamey, and attending meetings of the Standing Committee on Industry, Transport and Natural Resources in Addis Ababa.

Carl J. Blomfield (M.A. 1934) and Gertrude E. (Grady) Blomfield (M.A. 1935) announce the marriages of their two eldest daughters. Both Mr. and Mrs. Blomfield are teaching school in Detroit.

Hans H. Boesch (1934-35), Chairman of the Department of Geography, Zurich University, is Secretary-Treasurer of the International Geographical Union as well as a member of the Executive Committee of the International Council of Scientific Unions. During the spring of 1963 he travelled to South-Asia and went to Eastern Europe in the autumn. His book, Flugbild der Schweizer Stadt was published in 1963, and van Nostrand has just published his Geography of World Economy.

Clyde J. Bollinger (1929-30), Emeritus Professor of Geography, University of Oklahoma, has written three volumes of an Atlas of Planetary Solar Climate, and a fourth volume is now underway.

Adelbert K. Botts (M.A. 1931, Ph.D. 1934) is a Professor of Geography and Chairman of the Department of Social Studies at Trenton State College.

Roger J. E. Brown (Ph.D. 1961), Research Officer, National Research Council, Ottawa, Canada, continues his research on permafrost in northern Canada. He announces the birth of his third child, a girl, in January of 1963.

Harry H. Caldwell (Ph.D. 1951), Associate Professor of Geography, University of Idaho, was a participant at the N.S.F. sponsored Institute of Modern Cartography at the University of Washington last summer. He is currently a consultant with the U. S. Forest Service. This summer he will be teaching at Long Beach State College.

Claire P. Campbell (1962-63) is currently a student at Boston University. She is co-author of a paper entitled "Status of Geography in the Secondary Schools of New Hampshire," published in the Journal of Geography.

Robert D. Campbell (Ph.D. 1949) is Professor and Chairman of the Department of Geography and Regional Science at the George Washington University. In 1963 his book, Pakistan: Emerging Democracy was published by Van Nostrand, and he has written A Question of Place with Eric Fischer and Eldon Miller, soon to be published. This spring he assumes duties as a program specialist in Calcutta for the Ford Foundation, Calcutta Metropolitan Planning Operation.

Norman Carls (Ph.D. 1935) holds posts as Visiting Professor of Geography at the Teachers College, Columbia University, and as Adjunct Professor of Geography at the University of Pittsburgh. He has recently authored Knowing Our Neighbors - Canada and Latin America.

Albert S. Carlson (Ph.D. 1939) is a Professor of Geography at Dartmouth College in New Hampshire.

Thomas W. Chamberlin (M.A. 1937, Ph.D. 1946) is Academic Dean and Professor of Geography at the University of Minnesota in Duluth.

Margaret S. Chew (Ph.D. 1960) is Professor and Chairman of the Geography Department at Wisconsin State College in La Crosse. Last summer she conducted a field trip to the western U.S. and Canada.

P.E. Church (M.A. 1932, Ph.D. 1937), Chairman of the Department of Atmospheric Sciences at the University of Washington in Seattle has been elected Vice President of the American Meteorological Society and President of the Pacific Division of the A.A.G. He reports that he is chiefly preoccupied with attempts to avoid all unnecessary paper work.

George S. Corfield (M.A. 1931) is Chairman of the Department of Geography and Geology at Nebraska Wesleyan University. Last summer he conducted 35 people on a tour to Europe.

Clark N. Crain (Ph.D. 1951) is Professor and Chairman of the Department of Geography at the University of Denver. His field research has taken him to northern Mexico and Southeast Asia. He is principal investigator for ARPO/ARO-D conducting research on methods of classifying and recording environment.

Harold F. Creveling (Ph.D. 1951) Professor and head of the Geography Department at East Stoudsburg State College, has been conducting investigations on the proposed Tochs Island Dam on the Delaware River. He read a paper at the A.A.A.S. Convention in Philadelphia on this subject. He and Mrs. Creveling will travel to Europe this summer and attend the I.G.U. Congress in Britain.

Floyd F. Cunningham (M.A. 1928, Ph.D. 1930) is on sabbatical this semester from his position as Professor of Geography and Director of the Climatology Laboratory at Southern Illinois University.

J. Tait Davis (Ph.D. 1960), Associate Professor of Geography and Regional Science at the George Washington University was visiting lecturer in geography at the University of Toronto in the summer of 1963. His, "Parkways, Values and Development in the Washington Metropolitan Region" was published by the H.R.B. in the Highway Research Record #16.

Veva K. Dean (M.A. 1940, Ph.D. 1949), Professor of Geography at Fitchburg State College, recounts her recent trip west with her boat "Boston Whaler". This summer she will be living in Edgartown, Martha's Vineyard, and invites Clark Geographers who will be on the island this summer to visit her.

George F. Deasy (Ph.D. 1948) is a Professor of Geography at Pennsylvania State University. He has recently published articles in Mineral Industries, vol. 33, and Mechanization, vol. 27, and is completing work on the Atlas of Pennsylvania Coal and Coal Mining: Part II, Anthracite which will be published as Bulletin 80 of the College of Mineral Industries of Pennsylvania State University.

Aubrey Diem (M.A. 1956), Associate Professor of Geography at the University of Waterloo, Ontario, once again led a field trip to Europe last summer as well as travelling in the U.S.S.R. Two of his articles on Sicily have recently been published in the Canadian Geographical Journal and in vol. 7 of the Canadian Geographer.

Sigismond de R. Diettrich (Ph.D. 1931) is Chairman of the Division of Social Sciences, Metropolitan Branch, Inter American University of Puerto Rico. The summer of 1961 he was a Visiting Research Professor at the University of Bonn, West Germany. His article, "Some Geopolitical Aspects of the Indo-Pak. Sub-Continent," was published in vol. 15 of United Asia.

David H. Du Biel (1956-57) is Acting Planning Director for the City of San Rafael, California.

Francis E. Elliott (Ph.D. 1952) is an oceanographer with the Heavy Military Electronics Department of General Electric Corporation, in Syracuse. He has recently published several articles on various oceanographic subjects.

Van H. English (Ph.D. 1942) is Professor and Chairman of the Department of Geography, Dartmouth College, New Hampshire.

Bart J. Epstein (Ph.D. 1956) is Supervisor, Sales Facilities Research, for the B.F. Goodrich Company.

Richard B. and Marcia D. Erickson (M.A.'s 1959) send greetings from Connecticut. Richard is Executive Director, Southeastern Connecticut Regional Planning Agency and delivered a paper at the New Jersey chapter of the AAG in 1963. Marcia presented a paper at Denver as well, and reports she is a busy housewife.

Wilma B. Fairchild (M.A. 1937) sends her regards from the American Geographical Society. At the Syracuse meetings of the AAG she was honored for her work in editing the Geographical Review.

Edith M. Fitton (M.A. 1929) is enjoying her retirement, and working part time in the library at Western College for Women in Oxford, Ohio.

R. J. Fletcher (1959-60) is a lecturer at the State University of New York at Buffalo. He is continuing his dissertation research.

Edwin J. Foscue (Ph.D. 1931) Chairman of the Department of Geography, Southern Methodist University, spent last summer in South Africa and returned by way of Australia and San Francisco. After the I.G.U. Congress in London he and Mrs. Foscue plan to travel in Scandinavia. The third edition of his book on Anglo-America will be published in 1964.

J. Keith Fraser (1955-56) is Chief of the Toponymy Division of the Geographical Branch, Department of Mines and Technical Surveys in Ottawa, Canada. He has recently written a Bibliography on Canadian Toponymy. He will receive his Ph.D. in June of this year.

Alfonso J. Freile (Ph.D. 1961) is Full Professor at Universidad Central de Venezuela. He published a book on the meteorology and climatology of Venezuela in 1962.

M. H. Ganji (Ph.D. 1954) is Professor of Geography, Tehran University and Director General of the Iranian Meteorological Department in Tehran. He has completed a Climatic Atlas of Iran to be released in 1964. His recent travels have taken him to the Far East and Europe for participation in the World Meteorological Organization Congress.

Kathleen M. Garrity (M.A. 1934) sends her best wishes from Worcester.

Alexander R. Gassaway (1957-58) is an Assistant Professor of Geography at the George Washington University in Washington, and has been conducting research on factors affecting the sufficiency of food supply in areas undergoing economic development. His work was undertaken mainly in Norway.

John L. George (M.A. 1956) is an Instructor at the State College at Salem, Massachusetts. He hopes to return to Clark soon to further his studies.

Louis J. Gillespie, 3rd (1962-63) teaches in the Senior High School in Hasbrouch Heights, New Jersey. He is completing his M.A. thesis, and announces his engagement to Susan J. Bruce of Hudson, Massachusetts.

Janet L. Glen (1960-62) is substitute teaching in Brick Township High School in New Jersey while writing her M.A. thesis.

Howard L. Green (M.A. 1949) is Distribution Planning Manager for the Ford Motor Company. His article, "Consultants," was published in the December, 1963, issue of Management Review.

Andreas Grotewald (M.A. 1951) is Associate Professor of Geography, University of Missouri at Columbia. In February 1963 he and his wife travelled to Puerto Rico, and last summer he gave three weeks of guest lectures at Friedrich-Alexander-Universität, Nürnberg. He published an article on trade statistics which appeared in the June, 1963, Annals of the A.A.G.

Edna M. Gueffroy (M.A. 1927) is a Professor of Geography at the Illinois State University at Normal, Illinois.

Neil W. Halkyard (M.A. 1951), headmaster at Shepherd Knapp School, Boylston, Massachusetts, reports the marriage of his daughter, Heather, in October, 1963.

Eleanor E. Hanlon (Ph.D. 1953) is now Technical Assistant to the Interstate Advisory Committee on the Susquehanna River Basin.

Alan Harris (1951-52), Lecturer in Geography at the University of Hull, England, is working on aspects of the historical geography of England in the 18th and 19th centuries.

Sister Mary Ursula Hauk, R.S.M. (Ph.D. 1958), Chairman of the Social Studies Department, Mount Aloysius Junior College, Cresson, Pennsylvania, is coordinating editor and author of an elementary geography series for Allyn and Bacon, Inc.

Dorothea Burton Hawley (M.A. 1947, Ph.D. 1949) is working for the Department of Defense in transportation intelligence.

M. Bahy Hefny (M.A., Ph.D. 1946-1950), chief of the Cartographic Unit, United Nations, has been with the U.N. since 1957 and is co-author of Egypt: A Compendium published by the American Geographical Society in 1958.

Gerald H. Hones (M.A. 1953), Senior Geography Master, The Harvey Grammer School, Folkstone, Kent, plans to join the staff of the Geography Department at Southern Connecticut State College during 1963-64 on a year's leave of absence from the United Kingdom.

Margery D. Howarth (M.A. 1934), is U.S. Aid Advisor to the Indonesian Committee preparing an Atlas of Indonesian Resources. She hopes to attend the I.G.U. meetings in London in July.

George F. Howe (B.A. 1922, M.A. 1924) is retired and spent the winter in California. He is "having a ball."

George M. Howe (Ph.D. 1956), Director of Regional Analysis Travelers Research Center, Hartford, Connecticut, was recently named chairman of the A.A.G. Committee on Climatology. Dr. Howe collaborated in a site survey for a new nuclear energy plant at Haddam Neck, Connecticut.

Joseph B. Hoyt (Ph.D. 1954), Chairman of the Social Science Department, Southern Connecticut State College, is building a geography major at SCSC and writing The Massachusetts Story.

Bert Hudgins (Ph.D. 1930) is revising his book, Michigan Geographic Backgrounds. His fifth grandchild, a boy, was born recently.

Paul Huffinton (M.A. 1929) retired last year as Chairman of the Department of Earth Sciences at Bridgewater State College, Bridgewater, Massachusetts.

Esther Kinch Hunter (M.A. 1940) is a homemaker in Rochester New York. Her husband, Lloyd, is now Professor of Electrical Engineering at the University of Rochester.

Preston E. James, (Ph.D. 1923), Professor and Chairman of the Department of Geography, Syracuse University, is author of One World Divided, published by Blaisdell in 1964.

William L. Jeyasingham (M.A., Ph.D. 1950-52), Head of the Department of Geography, Jaffna College, Vaddukoddai, Ceylon, did field work in 1963 in Kerala, South India, on the subject of Inter-Caste tensions in the Kerala Church. Dr. Jeyasingham is Director of the Christian Institute for Study of Religion and Society and also a member of the advisory committee on Racial and Ethnic Relations for the World Council of Churches.

Katherine C. Johnson sends best wishes from Brooklyn, New York.

Lane J. Johnson (M.A. 1954, Ph.D. 1960) is Assistant Professor of Geography at Wayne State University, Detroit, Michigan. He has written "Centrality within a Metropolis," forthcoming in Economic Geography.

William F. Kane (M.A. 1954) is Director of Planning and Research, Worcester Area Chamber of Commerce.

Lois R. Keller (M.A. 1929) is retired and sends greetings from Cleveland Heights, Ohio.

Edward S. Kersch (M.A. 1958) is Senior City Planner Detroit City Plan Commission.

Harold F. Keuper (M.A. 1961), Assistant Professor of Geography and Planning, Waterloo Lutheran University, Ontario, Canada, is continuing research in functional classification of cities and planning theory. He has been teaching courses in Planning Theory, Planning Law and Administration, Urban Geography, and Cartography.

M. Halim Khan (Ph.D. 1957) is Professor of Geography at Gadjah Mada University, Jogjakarta, Indonesia, on leave from Aligarh Muslim University, India, currently in process of writing An Economic Geography of Madura.

Harry B. Kircher (Ph.D. 1961) is an Economist with the Federal Reserve Bank of St. Louis and Lecturer at Washington University. He has written an article on "One Aspect of the Resources of Missouri" to be published in the Business and Government Review, University of Missouri.

Esther L. Kistler (M.A. 1938) sends greetings from Nanticoke, Pennsylvania.

William A. Koelsch (M.A. 1959), Instructor in History, Florida Presbyterian College, is one of the cooperating faculty from the Southern Division for the new A.A.G. Geography in Liberal Education Project. He plans to complete his Ph.D. at the University of Chicago by September.

George Langdon (Ph.D. 1951) is Professor of Geography, West Chester State College, Pennsylvania. His book Exploring Earth Environments-a World Geography, is being published.

James S. Lee (1940-41) graduated from a 10 months resident course of the Industrial College of the Armed Forces at Ft. McNair Washington, in June 1963. He has been with the Department of Defense for twenty years and currently Senior Civilian Specialist of the Target Systems Analysis Team in the Defense Intelligence Agency. He and his wife Madelaine are living in McLean, Virginia.

Minnie E. Lemaire (M.A. 1932, Ph.D. 1935), Chairman of the Geology and Geography Department at Mount Holyoke College, travelled in the West and Southwest in London this past summer.

Urban J. Linehan (M.A. 1946, Ph.D. 1955) sends greetings from Silver Springs, Maryland.

Dana A. Little (M.A. 1950) is Acting Director, Division of Research and Planning, Maine Department of Economic Development.

Trevor Lloyd (Ph.D. 1940), Chairman and Professor of Geography, McGill University, Montreal, Canada, is anticipating the construction of a new geography building and is busy keeping the department activities running smoothly from Axel Heiberg Island to British Guiana.

Richard and Miriam Lockhart (M.A.'s 1957) founded and operate the Cambridge Montessori School (for pre-schoolers). Richard is project Planning Officer-Boston Redevelopment Authority while Miriam keeps the home fires burning. The Lochharts' second child, Edith Augusta, was born last October.

Richard F. Logan (M.A. 1937), Professor of Geography at the University of California at Los Angeles, is continuing research in geomorphic mapping of desert areas through field work in Arizona and California. He hopes to attend the I.G.U. meetings in London this summer. One of his daughters was recently married, the other is a stewardess for Pan American Airways.

Harriet Ruth Long (M.A. 1941, Ph.D. 1955), Head of the Geography Department and Acting Director of Arts and Sciences Program, Edinboro State College, Pennsylvania, plans to attend the I.G.U. meetings and visit the Soviet Union this summer.

Robert and Aleta Looker (M.A.'s 1960) are living in Cheshire, Connecticut. Their third child (second son) was born in November, 1963.

Arthur C. Lord (M.A. 1959) is Assistant Professor of Geography and Earth Sciences at Millersville State College, Pennsylvania. His Physiography of Pennsylvania was published by the Phillip-Campbell Press in December, 1963.

Agrippina Macewicz (Ph.D. 1964) is on the staff of Bridgewater State College.

George C. MacGillivray (M.A. 1951) is with the U.S. Government in Washington, D.C. The MacGillivrays have three children and "...live from day to day and hand to mouth!"

Neva McDavitt (M.A. 1929) has retired from the staff at Illinois State University, Normal, Illinois.

Grace Lee McIntosh (B.Ed. 1931) sends greetings from Rome, New York.

Wallace E. McIntyre (M.A. 1947, Ph.D. 1951) is employed by the U.S. Government and has been a part time professional lecturer in geography at the George Washington University, Washington, D.C.

Therese F. McQueeny (M.A. 1930) is a teacher in the Geography Department of Burncoat Junior High School, Worcester, Massachusetts.

Emanuel Maier (Ph.D. 1961) is acting Chairman, Department of Earth Science, State College at Bridgewater, Massachusetts. His son is attending Middlebury College.

Sister Marion S.C.H. (Ph.D. 1963), Instructor of Geography, Academy of the Assumption, Wellesley Hills, Massachusetts, had a book published in September, 1963. She is preparing television geography programs for teachers and pupils.

Wilhelm Matzat (1951-52) is living in Frankfurt.

Frederick S. Merriam (M.A. 1946) is a Sales Representative for Waddell and Reed, Inc., in New York City.

Paul J. Mika (1957) is Assistant Professor of Geography University of Maryland. The Mika's third child, a girl, was born in September, 1963.

Paul C. Morrisson (Ph.D. 1941), Professor of Geography, Michigan State University, East Lansing, Michigan, taught summer school in 1963 at the University of Puerto Rico. His work, "Population Changes in Mexico, 1950-1960," is published in the Papers of the Michigan Academy of Science, Arts and Letters.

John M. Moulton (1958-59), Chairman of the Department of Geography and Geology, Hastings College, Nebraska is currently doing research on pump irrigation on the High Plains of Nebraska and Kansas.

George N. Nasse (B.A. 1953) earned his Ph.D. at the University of Michigan in 1960 and is Assistant Professor at Northern Michigan University, Marquette, Michigan.

Herman L. Nelson (Ph.D. 1954), Professor in Geography Social Science Department, State College, Cedar Falls, Iowa, is currently working on two articles.

Norton Nichols, Jr. (M.A. 1950), Assistant Superintendent, Educational Services, Antelope Valley Joint Union High School, sends greetings from Lancaster, California.

Howard L. Ohman (M.A. 1949) is employed as Geographer U.S. Army Laboratories, Natick, Massachusetts.

Ralph E. Olson (Ph.D. 1946), Chairman of the Department of Geography, University of Oklahoma, at Norman, spent the summer of 1963 travelling in Europe with his family.

Pedro A. Parrilla (1961-63), Instructor of Economics and Geography, University of Puerto Rico at Rio Piedras, completed his Ph.D. preliminary exams this month and will spend the summer working on his dissertation.

John W. Pawling (M.A. 1956) is Instructor of Geography Western Michigan University, Kalamazoo. His article "Population Distribution According to the Climate Areas of W. Köppen" appeared in the September, 1963, issue of the Professional Geographer.

Robert F. Perry (Ph.D. 1957), Professor of Geography at Worcester State College, is continuing his research in agricultural geography and land use.

Rafael Pico (M.A. 1934, Ph.D. 1938), President of the Government Development Bank for Puerto Rico, will be travelling through the Western U.S. this summer and will visit Clark next winter as a member of President Jefferson's Council. He is finishing a book "Geografia Economica de Puerto Rico," second volume of Geografia de Puerto Rico, to be published by the University of Puerto Rico. He also authored the October, 1963, issue of the AGS' Focus.

Ada G. Piper (1946) sends greetings from Washington, D.C.

Etha M. Pruser (M.A. 1954) is Assistant Professor of Geography, Newark State College, Union, New Jersey.

Louis O. Quam (Ph.D. 1938) is Director of Earth Sciences Division, Office of Naval Research, Washington, D.C.

Azra Husain Rahman-Khan (Ph.D. 1953) is Principal of the S.I.C. Rahim English School, Hyderabad, West Pakistan. She has a daughter and two sons. Her travels have taken her to Australia and the Far East.

Major Lawrence E. and Clara R. Randall (M.A.'s 1950) are at Travis AFB, California, where Larry is a pilot for the Military Air Transport Service.

Richard R. Randall (Ph.D. 1955) is manager, Washington Office, Rand-McNally and Company.

John W. Reith (M.A. 1941), Associate Professor of Geography, University of Southern California, completed a series of 32 television programs "The Changing World" in spring 1963. His book California and the West a fourth grade text was published by the Fideler Company in 1963. He presented a paper before the California Conservation Council in November, 1963, entitled "Population Pressure and the Fuel Supply." Three other research papers on fuels are now in progress.

Walter W. Ristow (Ph.D. 1937) is Chief of the Map Division of the Library of Congress and is living in McLean, Virginia.

Ina Cullom Robertson (M.A. 1925) is retired and reportedly "...basking in Florida sunshine."

J. Lewis Robinson (Ph.D. 1946) is Professor and Head of the Department of Geography, University of British Columbia at Vancouver. His recently reviewed list of publications over the past 20 years records 4 books, 7 chapters in geography texts, 40 articles in geographical periodicals, 10 major articles for 9 different encyclopedias, and 7 wall maps.

Judith Rodier (1962-63) is teaching science at Oxford Junior High School, Oxford, Massachusetts.

John F. Rooney (1962-63) is working on his dissertation while continuing his duties as Instructor in Geography, University of Wyoming.

John Kerr Rose (1932) is Senior Specialist in Natural Resources and Conservation with the Legislative Reference Service Library of Congress. He has been on detail to the House Appropriations Committee.

Robert W. Rucker (M.A. 1928) continues to reside in Bridgewater, Massachusetts, after his retirement from the staff at Bridgewater State College.

I. Made Sandy (Ph.D. 1960) is Chief of Research, Geographic Institute of the Indonesian Army Topographic Service. Major Sandy continues to direct land utilization mapping in Indonesia. His important news is the announcement of his marriage to the former Sri Darmeny of Central Java.

William F. Sargent (1946) is Junior Clerk, Yale Service Bureau, New Haven, Connecticut.

Anthony Sas (Ph.D. 1955), Associate Professor of Geography at Madison College, Harrisonburg, Virginia, had several articles published this year in the Grolier Encyclopedia. He is continuing research on a book.

Barbara Saydam (M.A. 1963) is working in the Research Department of the Providence, Rhode Island, Redevelopment Authority.

Leonard R. Schneider (M.A. 1930) is head of the Science Department, John Hay High School, Cleveland, Ohio.

Joseph R. Schwendeman (M.A. 1927, Ph.D. 1941), Chairman of the Department of Geography, University of Kentucky, has published a world map projection, The Geomatic. He is also doing research on Cold Waves patterns.

Gerald W. Schultz (Ph.D. 1964) and Jean Salvi Schultz (1957-58) are moving from the Geography Department of the University of Wisconsin at Milwaukee to Drake University, Des Moines.

Marjorie Shank (M.A. 1923) is Professor of Geography at Southern Illinois University in Carbondale.

Earl B. Shaw (Ph.D. 1933) continues as Professor of Geography at Assumption College, Worcester, Massachusetts.

Ada M. Shawkey (1947-48) is Associate Professor of Geography at Framingham State College, Massachusetts.

Angelika Sievers (M.A. 1936) is Professor of Geography at State Teacher Training College, Vetcha, Oldenburg, West Germany. Her book, Ceylon, A Social Geography, is being published by Steiner Verlag Wiesbaden. She would welcome visits to her home of any Clark Geographers after the IGU meetings in London this summer.

Victor W. Sim (M.A. 1957) is Assistant Professor of Geography at the University of Western Ontario in London. He has been teaching geomorphology and a graduate course in Arctic problems.

Robert B. Simpson (M.A. 1934, Ph.D. 1941) has been Principle Engineer with the Autometric Corporation in Washington, D.C., since retiring from the Corps of Engineers in 1961. He is also professional lecturer at the George Washington University.

Gouind Saran Singh (Ph.D. 1962) is Chairman of the Department of Geography, Karnatak University, Kharwar Mysore, India. He has had two articles and a book on political geography published.

Helen Boyer Smith (M.A. 1938) is a homemaker in Napa, California.

Helen L. Smith (Ph.D. 1958) is visiting Lecturer, University of Illinois, Chicago (Navy Pier). She has recently had book reviews published in three geography periodicals.

Raymond E. Specht (M.A. 1947) is Associate Professor of Geography at Wisconsin State College, Stevens Point. He has submitted his dissertation to Northwestern University.

Karl Stacey (Ph.D. 1955) Professor of Geography, Kansas State College, Manhattan, is 1962-64 Chairman of the Great Plains-Rocky Mountain Division of the A.A.G. He spent the summer of 1963 in Spain and Portugal.

Reed F. Stewart (M.A. 1963) is Assistant Secretary of the Unit of Field Studies, National Council, Episcopal Church in New York. He would like to hear from other students of geography as applied to religion.

Robert G. Stone (1931-32) continues as Chief of the Scientific Information and Publications Division, Headquarters USAF Air Weather Service. His office is being transferred to Washington, D.C., this year.

Phelp N. Swelt (M.A. 1935) reports that there has been no change in his status.

John L. Taylor (M.A. 1940, Ph.D. 1953) is consultant on Territorial Affairs, Committee on Interior and Insular Affairs, U.S. House of Representatives. He visited the Far East and Western Europe as a member of the U.S. Naval Reserve.

Amy T. Tenney has retired and is living in Keene, New Hampshire.

Ray W. Tobey (M.A. 1953) is retired and living at Pine Cone Farm, Fairfield, Maine.

Joseph A. Tosi, Jr. (Ph.D. 1959) is Associate Ecologist Inter-American Institute of Agricultural Sciences, San Jose, Costa Rica.

Grady O. Tucker (Ph.D. 1957) is Report Writer, Larry Smith and Company Real Estate Consultants, Washington, D.C.

Mazie Tyson (1941 and 1947) is Associate Professor in Geography at A and I State University, Nashville, Tennessee. She cooperated in the opening of the Scott Hotel in St. Thomas, Virgin Islands.

Shirley R. VanBlarcom (1952-53) is a 7th Grade Geography teacher in Washington, D.C.

Eugene Van Cleef (Ph.D. 1926) is Emeritus Professor at Ohio State University, Columbus. He has been serving as consultant to the City of Marysville, Ohio, in connection with their comprehensive plan. During 1963 Dr. Van Cleef completed five articles and co-authored Global Geography, a high school economic geography text. He was also made a Honorary Life Member of the Ohio Academy of Sciences in April, 1963.

Wouter Van de Bunt (1951-52) is Executive Assistant to the General Manager KLM Royal Dutch Airlines, New York City.

W. Van Royen (Ph.D. 1928), Professor and Head of the Department of Geography at the University of Maryland, College Park, has completed an extensive revision of Fundamentals of Economic Geography for a fifth edition. He has been reappointed as Vice-Chairman of the Scientific Advisory panel to the Secretary of the Army.

H. E. Van Tuyl, Jr., sends greetings from Arlington, Virginia.

J. E. Vance, Jr., is Professor of Geography at the University of California, Berkeley.

Kripa Nath Varma (Ph.D. 1956) is Professor and Head of the Graduate Department of Geography, at the Government Hamidia Arts and Commerce College, Bhopal, India. He has recently travelled extensively in South Asia and has published an Atlas of the World in the Indian language. In his department are 8 Ph.D. candidates and 50 M.A. candidates.

Charles B. Varney (M.A. 1953, Ph.D. 1963) is Associate Professor of Geography, Wisconsin State College at Whitewater.

David E. Vincent (M.A. 1963) is Instructor in Geography Plymouth State College, Plymouth, New Hampshire.

Paul P. Vouras (M.A. 1951) is an Associate Professor at Paterson State College, Wayne, New Jersey.

Lillian H. Wallace (M.A. 1941) is retired and lives in Westfield, Massachusetts.

Miles W. Weaver (M.A. 1951) is Planning Consultant Northeast Planning Associates, Incorporated. He is also President of Main Sailing Yachts specializing in the sale of Sailboats.

Seymour (Si) West (M.A. 1941) is a Branch Chief for the U.S. Government. The West's fifth child (first daughter) was born in October, 1963.

Katheryne Thomas Whittmore (M.A. 1925, Ph.D. 1936) is Professor Emeritus, State University College, Buffalo, New York. She is working on a revision of a fifth grade text.

Brent Lloyd Wills (1942-43), Professor and Chairman of the Department of Geography, University of North Dakota, Grand Forks, has recently published North Dakota; The Northern Prairie State. He plans to spend part of the coming summer in Europe.

A. J. Wraight (Ph.D. 1951) is Chief Geographer, U.S. Coast and Geodetic Survey, Washington, D.C. He has recently had two articles published and is working on a book on physical geography.

Marion I. Wright (M.A. 1946) is Associate Professor of Geography and Chairman of the Division of Social Sciences, Rhode Island College, Providence.

Leo J. Zuber (1948-49) is Assistant Regional Director for Special Programs, Urban Renewal Administration, Housing and Home Finance Agency, Atlanta, Georgia. His job requires extensive travel in the South-eastern States. He is book review editor for two weekly newspapers.

Peter Goheen (M.A. 1964) Peter will be at the University of Chicago next year.

DEGREES TO BE GRANTED

Ph.D.'s

John Keith Fraser - The Physiography of the Boothia Peninsula Area, Northwest Territories: A Study in Terrain Analysis and Photo Interpretation in an Arctic Area

Mohammed Aminul Islam - Crop Combination Regions in East Pakistan

Agrippina Anne Macewicz - Changes in the Land Use Patterns in Pomerania, Poland, 1938-1960

Richard B. Preston - A Study of the Transition Zone that Borders the Central Business District

Carolyn J. Ryan - Intra-city patterns of Residential Vacancy Rates

Gerald W. Schultz - A Study of Urban Settlements in Turkey

M.A.'s

Robert H. Arnold - The Role of the Waterfront in the Economic Development of Newburyport

Maung Hla Tun Aung - Cotton Production in Central Burma 1946-1961

Peter G. Goheen - The Central Places of Southern Ontario, A Geographic Study of their External Relations

Lillian Kent - Comparative Study of Fitchburg and Leominster

Maria Maso Fernandez - Rice Production in Consolacion Del Sur, Cuba

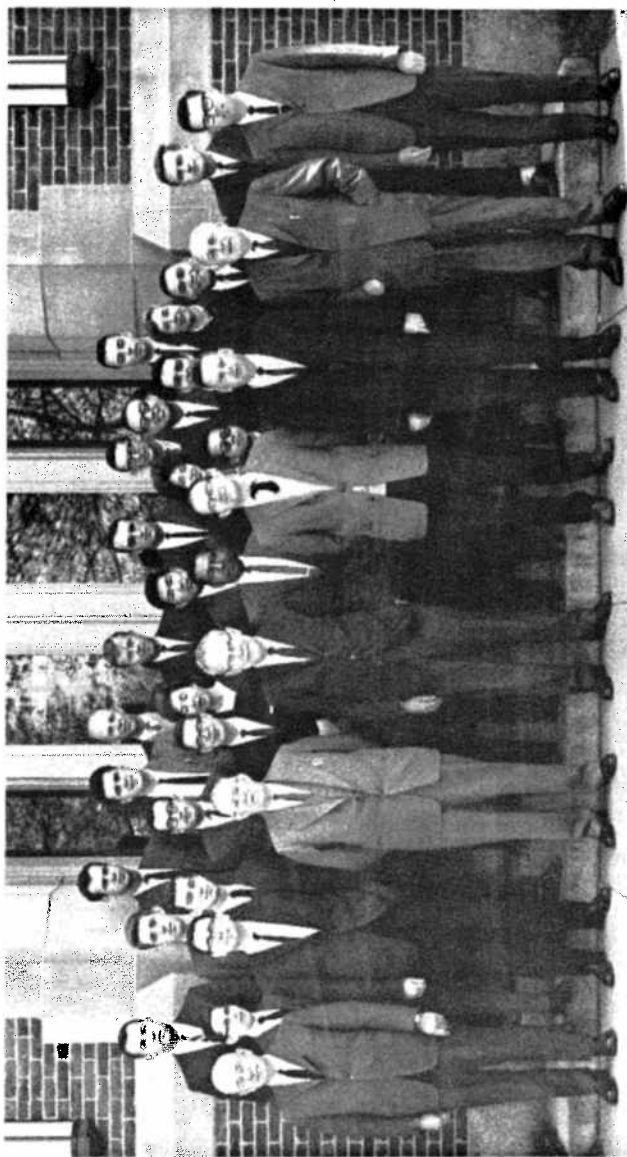
Nathan H. Meleen - The Changing Geography of the California Prune Industry

Theodore S. Pikora - An Investigation of the Seasonal Changes in the Distribution of the Influence of Maritime and Continental Factors in the North East

George B. Priddle - Recreational Use of Algonquin Park, Ontario

Harry A. Sickler - Changes in Agricultural Land in Gloucester Co., New Jersey

Hamideh M. Tavakolian - The Role of Petroleum in Iran's Economy



THE GRADUATE SCHOOL OF GEOGRAPHY 1963-1964

Back row: left to right: David Ames, Roger Roberge, Klaus Kroner, Robert Adams, George Downey, Merlin Lawson, Charles Hardy. Third row: Richard Hecock, Bryan Thompson, Salvatore Natoli, Doris Peontak, Kui On Louie, Bobbie Newman, Barry Berk, Priscilla Bennett. Second row: Peter Goheen, Duane Bauman, Kenneth Olson, Shayam Sharma, Chatchai Pongprayoon, David Arey, Jesse Pendleton, George Priddle. Front row: Dr. Warman, Dr. Fuchs, Mr. Burnham, Dr. Murphy, Dr. Kates, Dr. Snead, Dr. Van, Nathan Meleen.

In The Workroom

Robert L. A. Adams (B. A. Williams College) is a native Vermonter preparing for his M.A. this year. He will return next year to complete the residence requirements and work on his thesis.

Shamimuddin Ahmad (B.Sc. and M.Sc. Dacca University) is completing his M.A. thesis which is concerned with Water Resources Management. After completing his degree he hopes to return to his home and teach in the Department of Geography at Peshwar University in West Pakistan.

David L. Ames (B.A. The George Washington University) has a predilection for Washington, D.C., exceeded only by his interest in urban geography. His thesis has been accepted at G.W.U. and he plans to work on his dissertation at Clark next year. Dave and his wife, Carol, have a son.

David G. Arey (B.A. Denison University) came to the workroom after serving 4 years on active duty as an officer in the U.S. Navy. Dave is interested in resources management and will be writing his thesis this summer. The Areys have a daughter who was born last September. Dave will begin Ph.D. residence next fall under a U.S. Steel Fellowship.

Robert Arnold (B.S. in Ed. Bridgewater State College) completed his M.A. thesis this year. Having completed his Ph.D. residence and language exam Bob will soon be ready for his prelims and work on a dissertation.

Duane D. Bauman (B.A. and M.A. Illinois State University) has brought his wife, Denise, and daughter, Bridget, from the midwest and has completed his Ph.D. residency. His interests are in resources and physical geography. After studying Spanish in Illinois this summer he will return in the fall for his language exam, prelims, and dissertation preparation.

A. Priscilla Bennett (B.S. in Ed. Fitchburg State College) has spent a busy year looking after her family and completing her M.A. residency. She will be working on a thesis this summer while vacationing in Canada.

Barry Berk (B.A. Hunter College) is at Clark this year from his home in Brooklyn, New York. His interests are in urban and cultural geography. He will take the brave step into wedlock this summer and will return to secondary school teaching in New York next fall.

George Downey (B.S. in Ed. Worcester State College) has completed his M.A. residency and will be working on a thesis this summer. George's primary interest is in geomorphology and he will return next fall to work towards a Ph.D. George and his wife have twin girls.

Farouk M. El Gammal (B.A. Honors Cairo University, M.A. Clark University) is here on a U.A.R. government grant. He has completed his Ph.D. prelims and is currently working on a dissertation in urban geography. Upon completion of his work he intends to teach at his Alma Mater.

Robert Gardula (B.S. in Ed. Bridgewater State College, M.A. Clark University) has been working on his dissertation in economic geography this year. Next September he will join the geography faculty at Illinois State University at Normal as an Assistant Professor. The Gardulas are anxiously awaiting the stork.

Peter Goheen (B.A. McMaster University) returned to the workroom this year to write a thesis in urban geography. He will receive his M.A. this June after which he will spend the summer in his native Ontario. Next fall Peter will enroll at the University of Chicago.

Charles W. Hardy, Jr. (B.S. in Ed. Fitchburg State College) is primarily interested in urban geography and also hopes to study historical geography. He will be working in the Library of Congress this summer and next year will write his thesis while teaching secondary school.

Marilyn Hayden (B.S. in Ed. Bridgewater State College and M.A. Clark University) has been working toward her prelims on a part time basis in the workroom this year, while teaching at Bridgewater.

Richard Hecock (A.B. Albion College, M.A. Wayne State University) is back for his second year in the workroom. He recently completed his prelims and is currently working on a dissertation. Dick's main interest is in recreation geography, and he maintains a strong interest in the geography of South Asia. He is looking forward to a teaching career upon completion of his degree.

Frank Hodges (B.S. in Ed. Farmington State College) has been working on his thesis this year. He hopes to complete the thesis this summer and return next autumn to prepare for his language exam and prelims. Frank and his wife have two children.

Gilbert Hunter (B.A. Wayne State University, M.A. Clark University) has been in the workroom part time this year while working for the Worcester Planning Department. Next year Gil hopes to return to academia as a teacher and continue toward a Ph.D.

Klaus E. Kroner (B.A. College of Wooster, B.El. Eng'g. New York University, M. Bus. Adm. American International College) has been completing his course requirements for the Ph.D. this year on sabbatical leave from the University of Massachusetts. He will return to U.Mass. this summer to teach a 3 week graduate course. Next autumn Klaus will be back at his post in the Engineering Department of U.Mass. and will work on his dissertation which deals with the impact of highway development in the Connecticut River Valley. The Kroners have two children.

Merlin P. Lawson (B.A. University of Buffalo) spent a busy year completing his M.A. residence in addition to exchanging wedding vows with the former Miss Nina Rising. Merlin is interested in physical geography and plans to work on his thesis this summer. He will return in the fall to continue toward a Ph.D.

James P. Lenahan (B.S. Military Science, U.S.A.F. University of Maryland) has been concentrating on his M.A. thesis this year. His interests include political geography and coastal geomorphology. Next year Jim (the Major) hopes to teach or return to government service.

Kui On Louie (Diploma de los Estudios Hispánicos, Madrid University) is a native of Hong Kong and comes to the workroom after a year of study at Ottawa University. He is interested in resources geography and will spend the summer working on a thesis. Next year he hopes to return to Clark.

Nathan H. Meleen (B.A. San Jose State) will receive his M.A. this June. He will return in the fall to continue work toward his Ph.D. and hopes to specialize in historical geography. He plans to begin teaching after next year.

Barrett Morgan (B.A. Yale University) is a native of Worcester and came to the workroom this February to work on an M.A. He plans to return in September to complete his course work.

Salvatore J. Natoli (B.S. Kutztown State College, M.A. Clark University) returned this year after 6 years teaching at Mansfield State College in Pennsylvania. Sam has been serving in several capacities this year after completing his Ph.D. prelims, these include general workroom advisor, unofficial student-staff liaison and teaching undergrad economic geography. He will return next fall and work on his dissertation in urban geography while teaching in the Clark evening college. His seventh grade geography text is nearing completion and will be published by Allyn and Bacon, Inc., in September, 1965.

Bobbie Newman (B.A. East Carolina College) is from Greenville, North Carolina. She completed her M.A. residency this year and plans to do research on her thesis this summer. Bobbie's major field is urban geography and she hopes eventually to become a teacher.

Kenneth V. Olson (B.S. in Ed. Central Connecticut State College, M.A. in Ed. Connecticut University) has spent this year completing his M.A. residency. This summer he plans to work on his thesis in urban geography before returning to his regular position as Social Studies teacher at Plainville High School in Connecticut in the fall. Ken hopes to continue on for a Ph.D. majoring in historical geography. The Olsons are to be congratulated on the birth of a daughter, Kirsten, on May 23.

Gerald Overstreet (B.A. Northwestern State College) is sharing his time this year between the workroom and the Worcester Redevelopment Authority. Last year Gerry taught at Plymouth State College in New Hampshire. He is writing his thesis in urban geography.

Doris Peontak (B.S. in Ed. Fitchburg State College) completed her M.A. residence requirements this year. She will be working on a thesis in urban geography while on vacation this summer. Doris plans to return next fall to take some more courses and complete her thesis which will deal with ethnic groups in Fitchburg.

Jesse Pendelton (B.S. Central State College, Ohio, M.A. Clark University) has been studying Spanish and preparing for his Ph.D. prelims this year as well as doing some course work. He is organizing a research problem on Negro C.B.D's for his dissertation. Jesse calls himself "...an urban geographer with a cultural bent."

Chatchai Pongprayoon (B.A., B.Ed. Chulalongkorn University, Bangkok) came to Clark from his job as a member of the Department of Social Sciences at Chiangmai University, Chiangmai, Thailand. He has been taking background courses this year. This summer he will be doing additional course work and will return in the fall to continue toward his M.A.

George B. Priddle (B.A. University of Western Ontario) is our outdoorsman. This year he spent writing his M.A. thesis on recreational use and wilderness perception. He was co-author of a paper on this topic presented at the A.A.G. Convention in Syracuse this spring. "Ranger George" will be working at Algonquin Provincial Park in Ontario this summer after which he will return to Clark to continue work toward a Ph.D.

Roger A. Roberge (B.A. Assumption College) completed his Ph.D. residence requirements this year and has been working on his M.A. thesis in urban geography. Next fall he will be back to continue work toward his Ph.D. Roger was married last fall to the former Miss Doris LaMontagne.

Carolyn Ryan (B.S. in Ed. Bridgewater State College, M.A. Clark University) has spent a busy year writing her Ph.D. dissertation. She will receive her degree this June and will then leave the workroom to join the Staff. Next year she will be assistant editor of Economic Geography and will lecture in geography.

Shyam S. Sharma (B.A. and M.A. Banaras Hindu University) spent the year completing his Ph.D. language and preliminary exams. Next year he will remain in Worcester writing his dissertation in economic geography. Upon completion of his Ph.D. he will return to India to teach.

Bryan Thompson (B.A. University of Toronto) returned to the workroom this year after a year's absence. He has been taking courses and working on his thesis in urban geography. This summer he hopes to complete his thesis and return in the autumn to prepare for his language and Ph.D. preliminary exams. Last summer Bryan was married to the former Miss Jean Martin.

GUEST LECTURERS

On October 21, Dr. Robert Lucas of the U.S. Forest Service and the University of Minnesota presented a lecture on Wilderness Perception and the Quetico Superior Area.

Dr. Saul Cohen of Boston University gave two lectures on October 29, dealing with marketing geography and retail store location.

Professor James E. Vance, Jr., of the University of California at Berkeley, spoke to the Graduate School on November 11 about research activities in the geography of wholesaling.

On November 21, Dr. R. J. Solomon of the University of Tasmania at Hobart presented lectures on urban geography research being done in Australia and a summary of the urban geography of Tasmania.

Professor Abel Wollman of Johns Hopkins University presented two papers on February 18 and 19, one on "Useless Problems in Geomorphology" and the other on "Useful Problems in Geomorphology". Dr. Wollman used applicability to human problems as the criteria of utility.

On March 23 and 24 Dr. David Lowenthal of the American Geographical Society visited Clark and gave lectures on "Landscape Perception" and "The Geography of Race Relations Some Caribbean Motifs".

MISSING MEMBERS OF C.U.G.S.

As geographers we are often concerned with where things are. The editors are no exception, so in true expression of our place bias we would like all the C.U.G.S. members who receive this document to help us locate the following persons. We know not their distribution:

Sherman R. Abrahamson	Eloise Nolde Johnson
Mary Arendes	Coen Riewiet de Jonge
Siddick Atrushi	Channing Rwen Kao
Si Baker	Marguerite Keinard
Cecil Bench	Walter K. Kirkwood
George E. Benoit	Clarence K. Koepp
Jean Boisvert	Mildred Corea Kohomban-Wickrema
Major John M. Collins	Mary Kramer
Catherine E. Cox	L.C. Krebs
Captain Samuel C. Dashiell	Oliver H. Laine
Dorothy M. Day	En-Lan Liu
David Dichter	Mesfin Mariam
Vincent Di Renzo	Maria B. Maso
Marian Armstrong Frieswick	William B. Moody
Ann Flynn	Walter K. Morrison
George W. Hartman	Richard E. Murphy
Paul Heyer	Clifford J. Nelson
Clarke F. Hess	Per Olof Nordell
Nancy Hudson	Fr. R. Paquette, S.J.
Robert Huggman	Elise Simmons Patterson
Thomas F. Hunt	Daniel Pawilowski

MISSING MEMBERS OF C.U.G.S. (Cont'd)

Benjamin V. Reed	Julia M. Shipman
Lewis Reinwald	Harry A. Sickler
Richard D. Sands	L. LeMar Stephan
Harley E. Scott	William R. Tyson
John M. Sherman	Lester I. Unterberg
Li Chang Shih	Lewis J. Winter

OBITUARIES

Paul E. Andrews passed away in December, 1963. He earned his M.A. degree in 1922 and was the first president of the C.U.G.S. Upon his retirement after 37 years as a public schools educator he was active in civic affairs in California.

Carleton P. Barnes, who received his M.A. from Clark in 1927 and his Ph.D. in 1929, died on September 18, 1962. Dr. Barnes spent 33 useful and productive years with the U.S. Department of Agriculture.

Nels A. Bengston passed away in early June, 1963. He received the Ph.D. from Clark in 1927 and was Chairman of the Department of Geography at the University of Nebraska.

George B. Cressey received his Ph.D. from Clark in 1931 and began a long career as a distinguished professional geographer and educator. He was Maxwell Professor at Syracuse University when he passed away on October 21, 1963.

Otis W. Freeman, who received the Ph.D. in 1929, died on April 3, 1964. He was retired from the staff at the University of Washington and an Associate Editor of Economic Geography.

Isabella Kingsbury Hart died on May 24, 1963. After receiving her M.A. in 1927 she organized and directed the Clark University geography field camp from 1929 to 1935. For the last 26 years she had been a member of the staff at Oswego State Teachers College in New York.